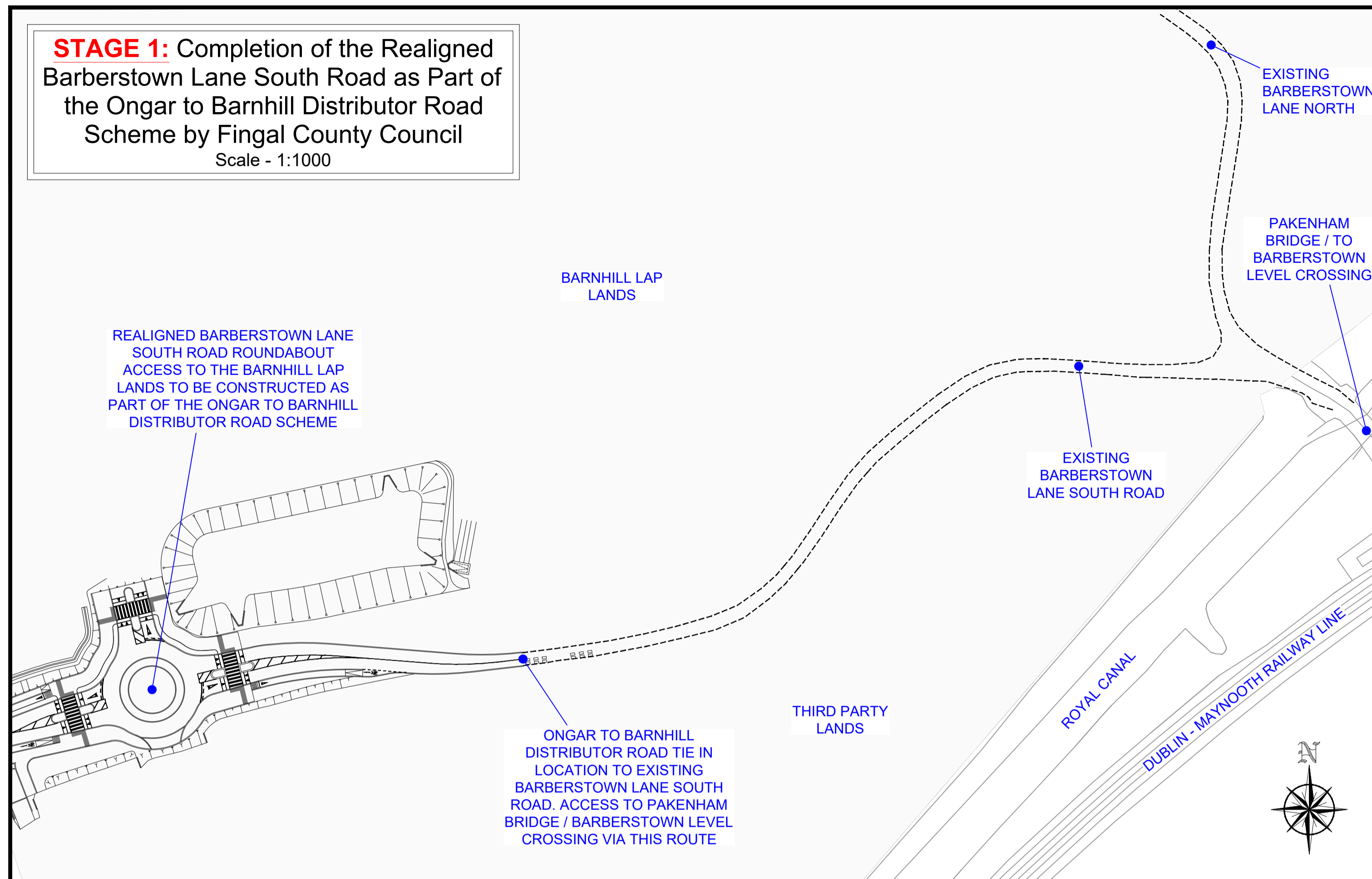
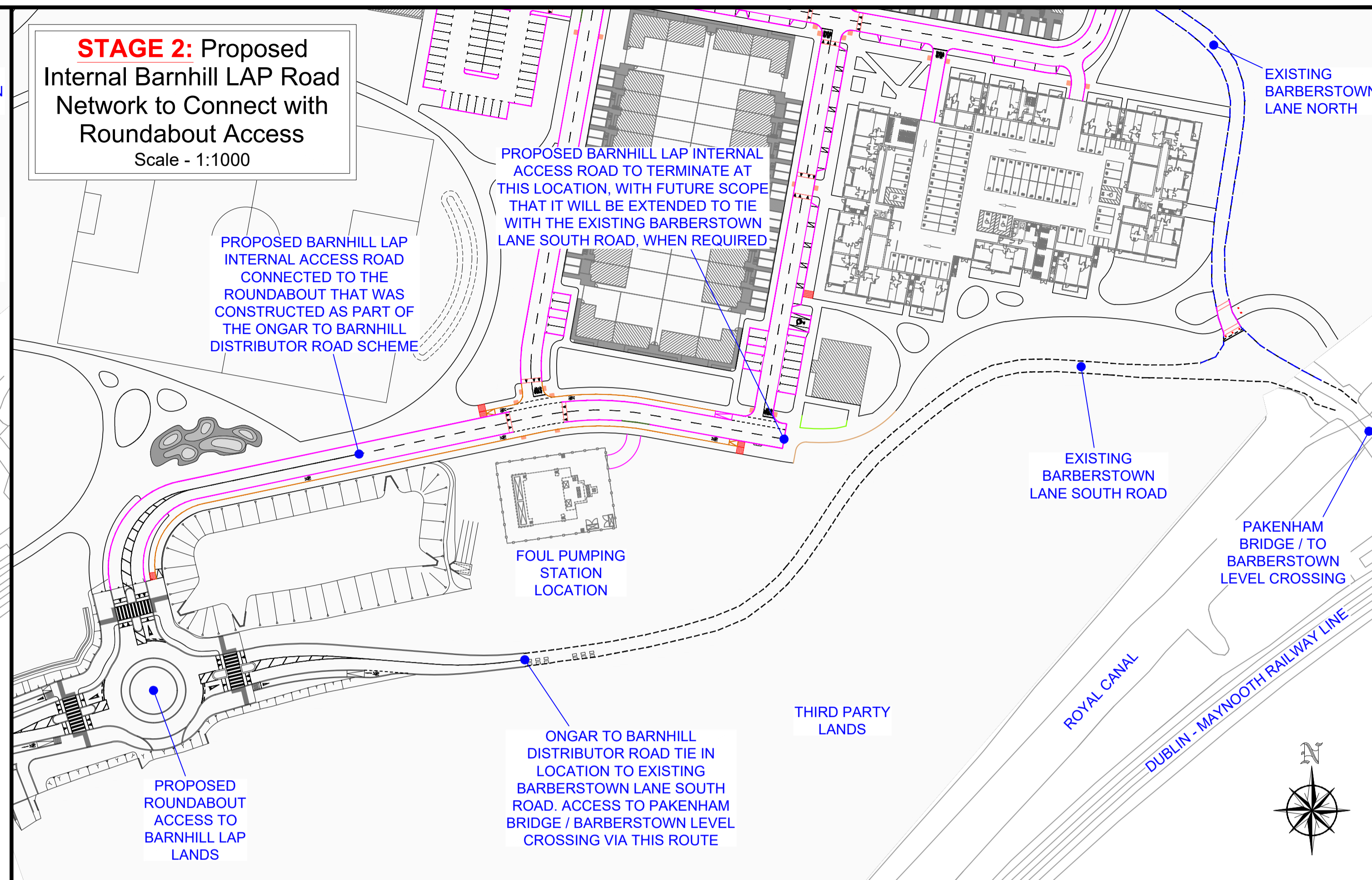


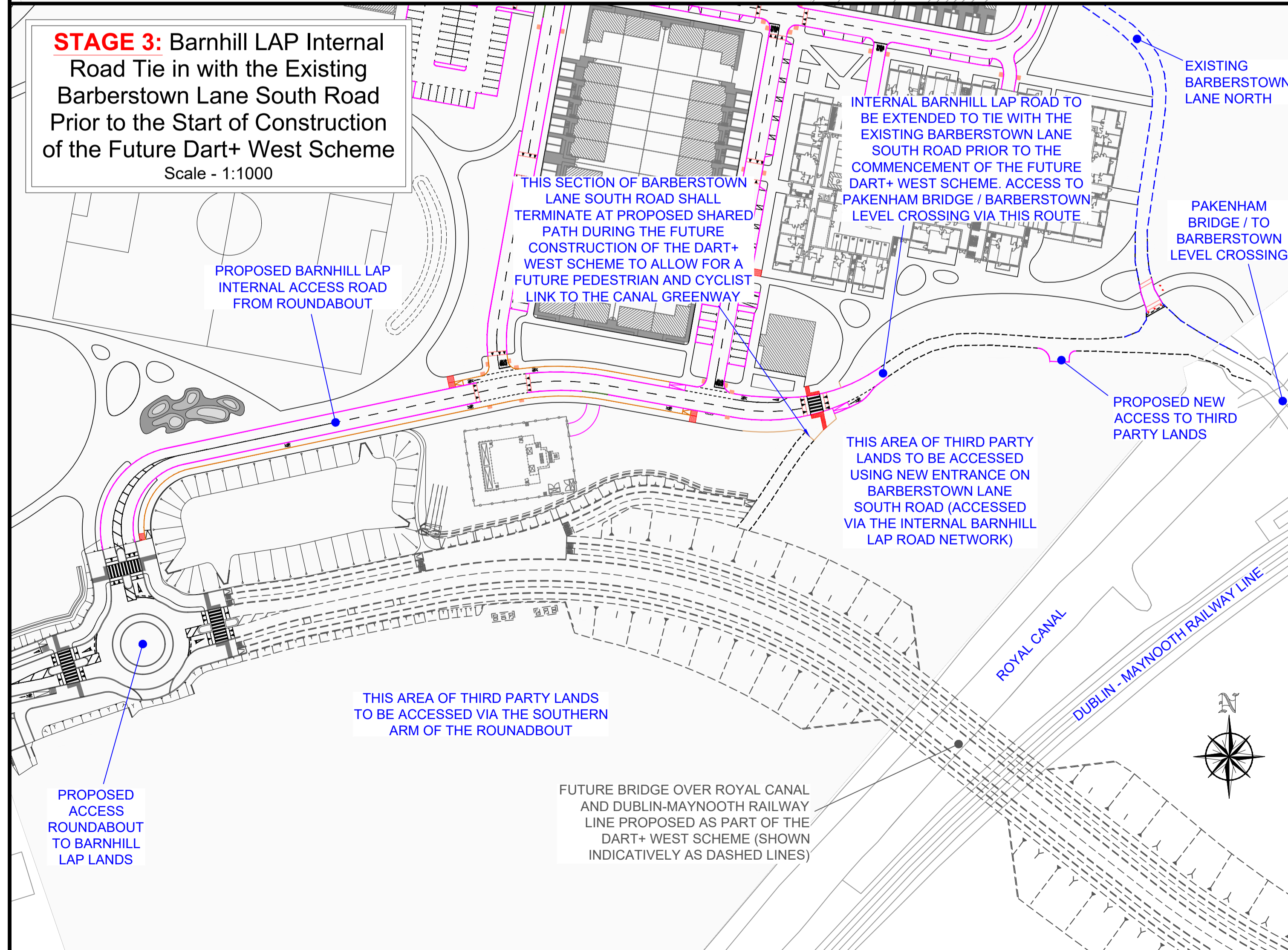
STAGE 1: Completion of the Realigned Barberstown Lane South Road as Part of the Ongar to Barnhill Distributor Road Scheme by Fingal County Council
Scale - 1:1000



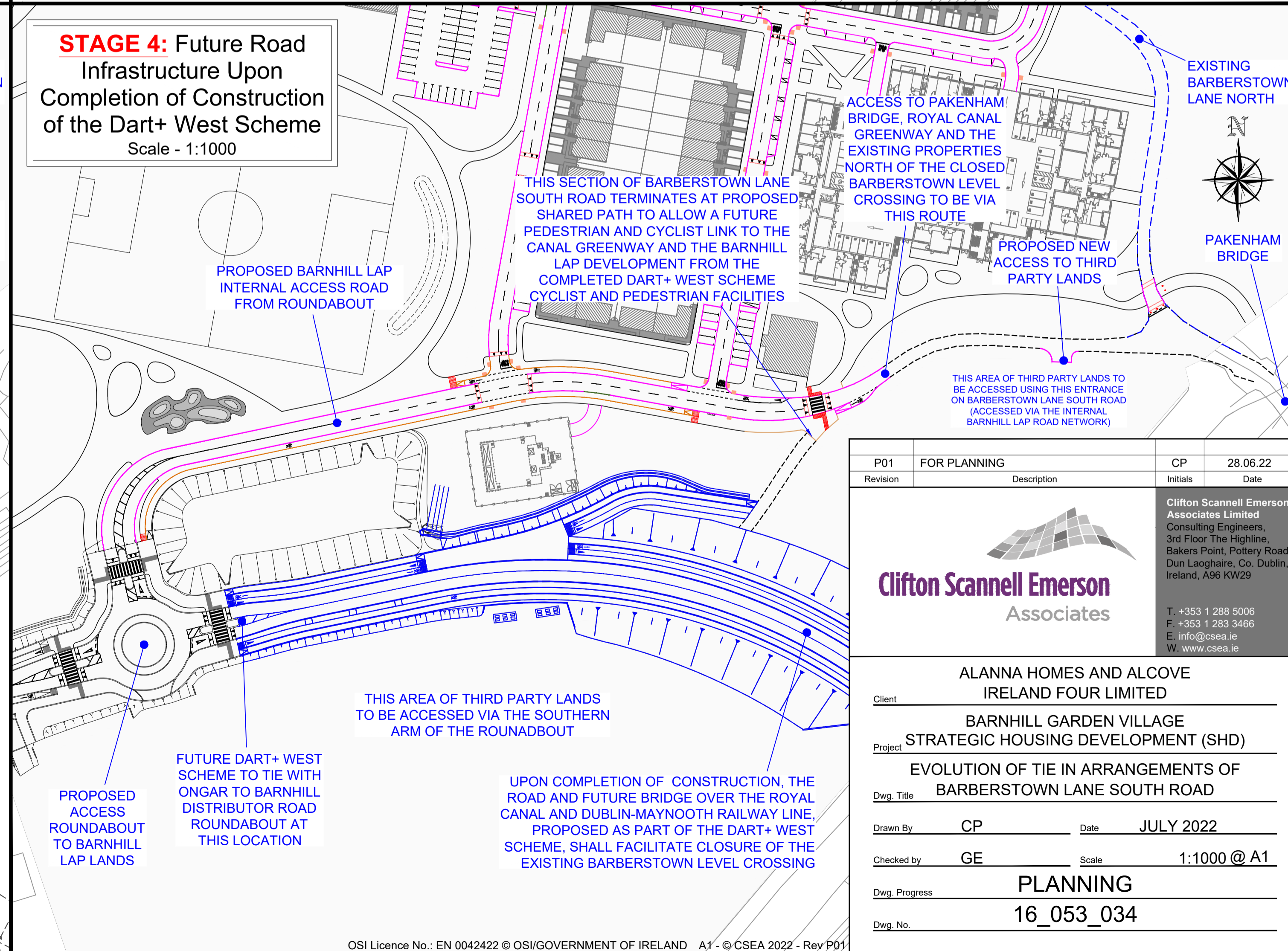
STAGE 2: Proposed Internal Barnhill LAP Road Network to Connect with Roundabout Access
Scale - 1:1000



STAGE 3: Barnhill LAP Internal Road Tie in with the Existing Barberstown Lane South Road Prior to the Start of Construction of the Future Dart+ West Scheme
Scale - 1:1000



STAGE 4: Future Road Infrastructure Upon Completion of Construction of the Dart+ West Scheme
Scale - 1:1000



P01	FOR PLANNING	CP	28.06.22
Revision	Description	Initials	Date

Clifton Scannell Emerson Associates
Clifton Scannell Emerson Associates Limited
Consulting Engineers,
3rd Floor The Highline,
Bakers Point, Pottery Road,
Dun Laoghaire, Co. Dublin,
Ireland, A96 KW29
T: +353 1 288 5006
F: +353 1 283 3466
E: info@csea.ie
W: www.csea.ie

Client	ALANNA HOMES AND ALCOVE IRELAND FOUR LIMITED		
Project	BARNHILL GARDEN VILLAGE STRATEGIC HOUSING DEVELOPMENT (SHD)		
Dwg. Title	EVOLUTION OF TIE IN ARRANGEMENTS OF BARBERSTOWN LANE SOUTH ROAD		
Drawn By	CP	Date	JULY 2022
Checked by	GE	Scale	1:1000 @ A1
Dwg. Progress	PLANNING		
Dwg. No.	16_053_034		